



CUSHMAN &
WAKEFIELD

FOR LEASE



Willoughby TOWN CENTRE



A CLASS OFFICE SPACE

20780 Willoughby Town Centre Drive, Langley, BC

Roger Leggatt

Personal Real Estate Corporation
Executive Vice President, Office Leasing
604 640 5882
roger.leggatt@cushwake.com

Max Zessel

Personal Real Estate Corporation
Senior Vice President, Office Leasing
604 640 5824
max.zessel@cushwake.com

Liam Boulton

Senior Associate
Commercial Sales and Leasing
604 629 5023
liam.boulton@cushwake.com



A Class Office Space FOR LEASE

THE DEVELOPMENT

The master plan incorporates pedestrian plazas that connect to nature trails, appealing water features and wide landscaped sidewalks that are complete with seating. The Willoughby Town Centre development completed and currently under-construction will encompass 176,000 sf of retail, restaurant and professional office space in addition to over 500 multi-family homes. Additional commercial, institutional and multi-family development is being planned for the final phases of Willoughby Town Centre.

LOCATION

Willoughby Town Centre is the Fraser Valley's only master plan, intergenerational, pedestrian oriented, socially active retail, commercial and multi-family development. Forming a vital centre within Langley Township, it is situated in the heart of Willoughby, one of the fastest growing communities in Metropolitan Vancouver.

PARKING

Parking ratio: 3 / 1000 sf leased.
Current rates are free of charge.

TENANT IMPROVEMENTS

Negotiable

OPERATING COSTS & PROPERTY TAXES (2020)

\$14.78 psf, per annum (Excludes in-suite janitorial.
Utilities are separately metered.)

ASKING RENTAL RATE

Contact listing agents for details.

TOWN CENTRE RETAIL ANCHORS:



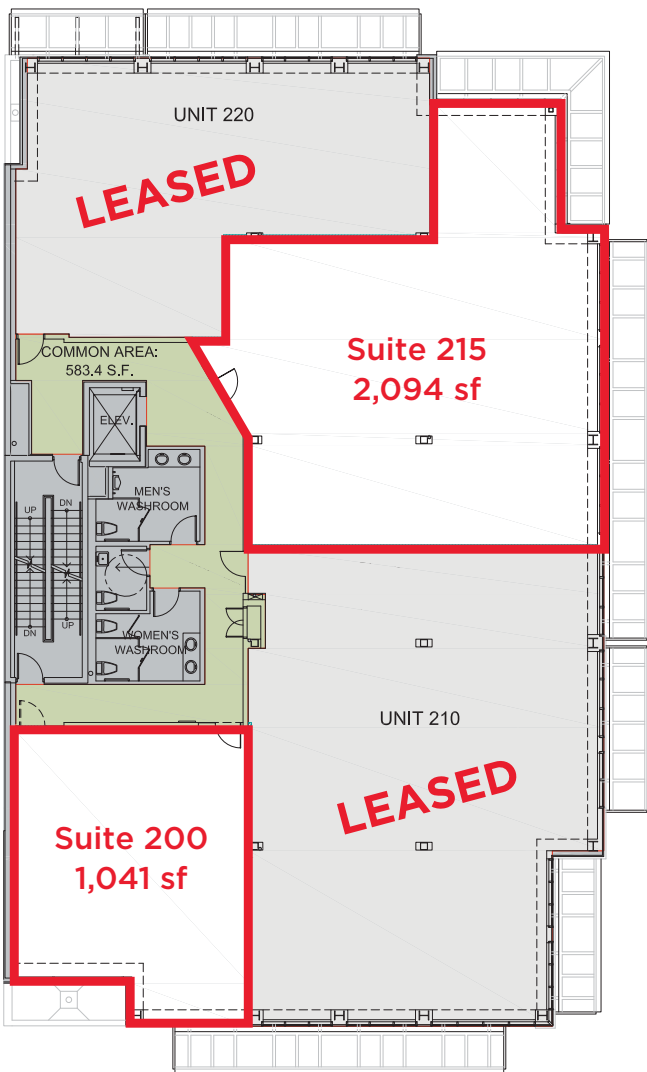
20780 Willoughby Town Centre Dr. Langley, BC



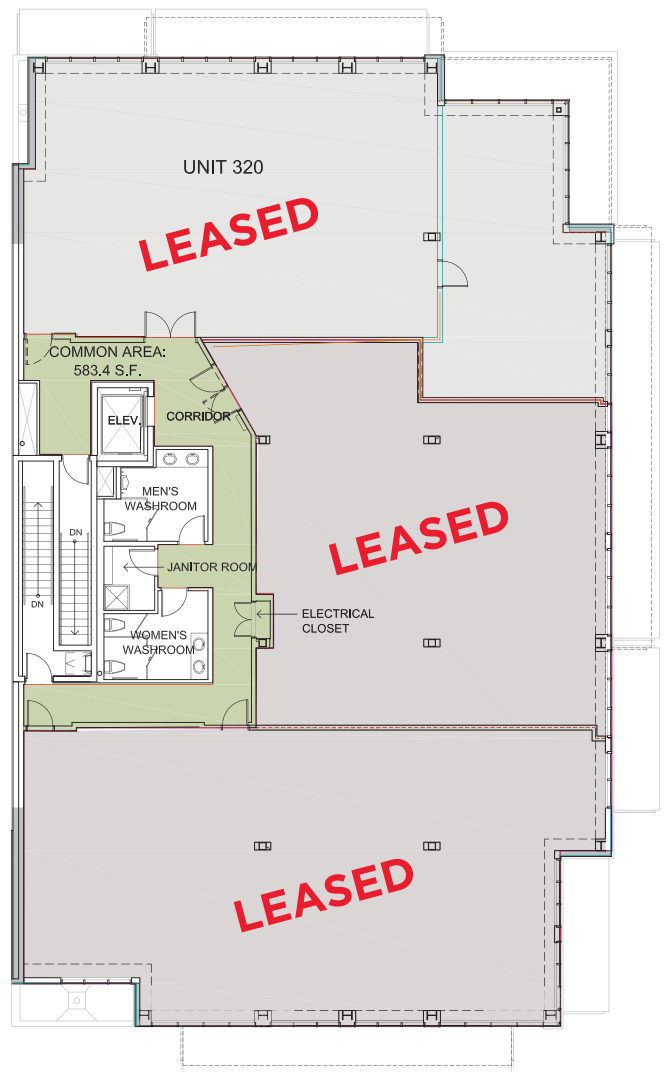
Willoughby TOWN CENTRE

AVAILABILITIES

- Suite 200 1,041 sf (Available Immediately)
- Suite 215 2,094 sf (Available Immediately)



SECOND FLOOR PLAN
SCALE: 1/8" = 1'-0"



THIRD FLOOR PLAN
SCALE: 1/8" = 1'-0"





A Class Office Space FOR LEASE



Willoughby TOWN CENTRE



Roger Leggatt
Personal Real Estate Corporation
Executive Vice President, Office Leasing
604 640 5882
roger.leggatt@cushwake.com

Max Zessel
Personal Real Estate Corporation
Senior Vice President, Office Leasing
604 640 5824
max.zessel@cushwake.com

Liam Boulton
Senior Associate
Commercial Sales and Leasing
604 629 5023
liam.boulton@cushwake.com

