



**CUSHMAN &
WAKEFIELD**

FOR LEASE

WILLOUGHBY TOWN CENTRE

**20780 WILLOUGHBY TOWN CENTRE DR.
LANGLEY, BC**

A CLASS OFFICE SPACE / 88% LEASED



Roger Leggatt

Personal Real Estate Corporation
Vice President, Office Leasing
604 640 5882
roger.leggatt@ca.cushwake.com

Max Zessel

Personal Real Estate Corporation
Associate Vice President, Office Leasing
604 640 5824
max.zessel@ca.cushwake.com

Liam Boulton

Sales Representative,
Commercial Sales and Leasing
604 629 5023
Liam.Boulton@ca.cushwake.com



**CUSHMAN &
WAKEFIELD**

**FOR LEASE
WILLOUGHBY TOWN CENTRE
20780 WILLOUGHBY TOWN CENTRE DR.
LANGLEY, BC**

THE DEVELOPMENT

The master plan incorporates pedestrian plazas that connect to nature trails, appealing water features and wide landscaped sidewalks that are complete with seating. Once complete, the development will encompass over 145,000 square feet of retail, entrepreneurial and professional office space and over 500 multi-family homes. Construction of the overall community commenced in the fall of 2012.

LOCATION

Willoughby Town Centre is the Fraser Valley's only master plan, intergenerational, pedestrian oriented, socially active retail, commercial and multi-family development. Forming a vital centre within Langley Township, it is situated in the heart of Willoughby, one of the fastest growing communities in Metropolitan Vancouver.

AVAILABLE SPACE

Suite 210 2,598 sf

PARKING

Parking ratio: 3 / 1000 sf leased. Current rates are free of charge.

TENANT IMPROVEMENTS

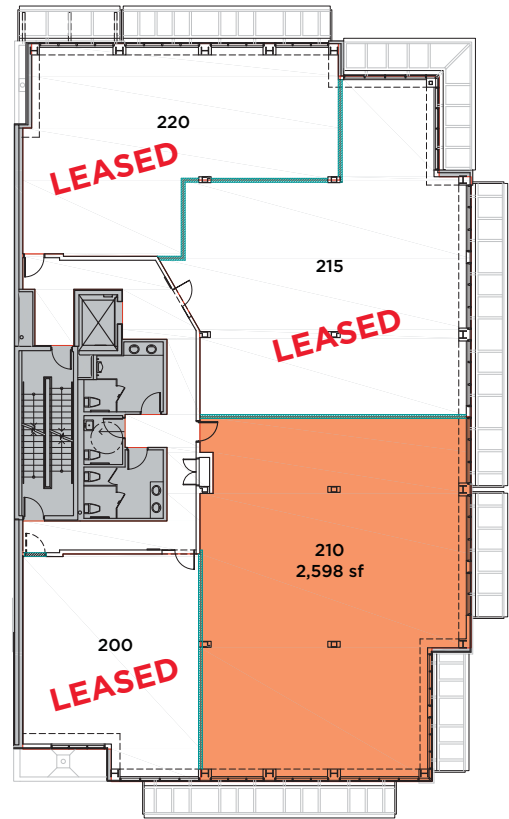
Negotiable

OPERATING COSTS & PROPERTY TAXES

\$14.23 psf, per annum (2017)

ASKING RENTAL RATE

Contact listing agents for details.



Roger Leggatt

Personal Real Estate Corporation
Vice President, Office Leasing
604 640 5882
roger.leggatt@ca.cushwake.com

Max Zessel

Personal Real Estate Corporation
Associate Vice President, Office Leasing
604 640 5824
max.zessel@ca.cushwake.com

Liam Boulton

Sales Representative,
Commercial Sales and Leasing
604 629 5023
Liam.Boulton@ca.cushwake.com